

ONE SEMESTER EXCHANGE

FACT SHEET

This program fact sheet is for all the inbound students from the various partner universities. In this document we will details the programs, intakes and the subsequent steps to be taken by the parent school & students.



Program Intake

Our student exchange typically has intakes in both the fall (Aug – Dec) and spring (Dec - March) semesters, allowing students to choose the most suitable time to embark on their exchange experience.

Once the nomination process for the semester exchange program is complete, the MSRIM then takes the responsibility of contacting the nominated students directly for the onboarding process and providing necessary immigration support.

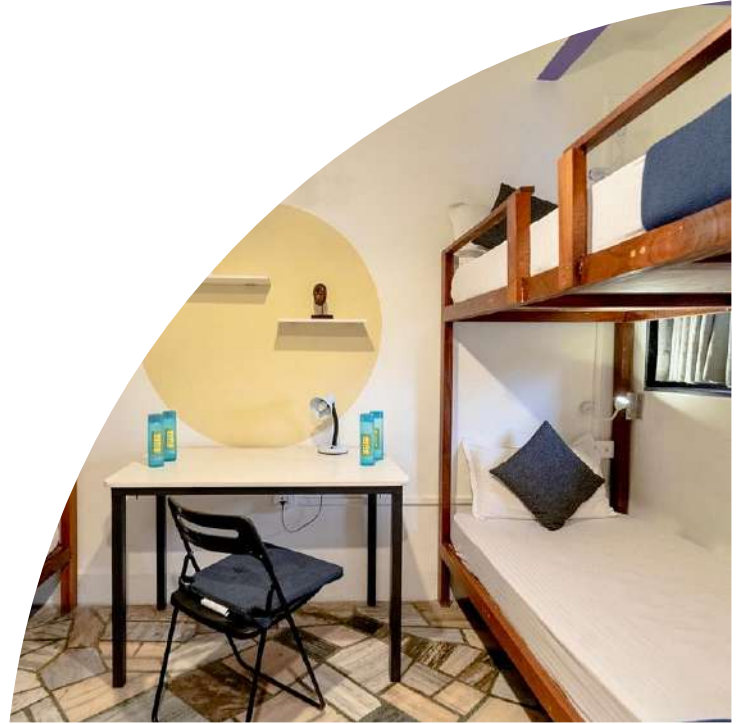
Upon completion of semester exchange program, MSRIM would provide the final marksheets that reflects the courses the students have successfully completed along with the corresponding grades or credits earned.



ACCOMMODATION

MSRIM offers a diverse selection of accommodation options to suit student's preferences, needs and budget whether you are looking for a shared apartment, a dormitory experience or a studio flat, we have something for everyone. We have dedicated team of accommodation specialists ready to assist you throughout the booking process (admin@msrim.org).

We strongly recommend students to book their preferred stay prior to their arrival on their own or with our support.



LIVING EXPENSES

On an Average Accommodation will cost INR 15000 -25000 per month. Food for one month for one person if he/ she cooks herself will cost INR 10,000/- Local Transportation depending on the mode of transport and frequency of travel will cost another Approx INR 5000/-



LIFE AT CAMPUS

At MSRIM, life is full of excitement, growth and endless opportunities. We make sure students to embark on a journey that goes beyond the classroom, where they create memories and shape their future. From academic advising and career counselling to health services and student wellbeing programs, we prioritize students' holistic development and wellbeing. We offer a wide range of extracurricular activities to cater to various interests – sports, arts, music, drama or community. We understand that navigating college life could be challenging at times. We have dedicated student support service on campus to assist every step of the way.



ACADEMIC GUIDELINES

Students are expected to attend classes in formal business attire and be well-prepared to engage actively in discussions, contributing to our peer-to-peer learning environment. Our institution prides itself on its diverse student body, representing nearly every state in India. Students must respect the campus facilities, including the library, sports infrastructure, and the privacy of other visitors such as fellow students, parents, and dignitaries. Classes follow a strict timetable, and 80% attendance is mandatory.

Important Dates

Semester Dates

Fall Semester – August – December

Spring Semester – December – March

Nomination Deadline

Fall Semester – March

Spring Semester - June

Application Form Submission Deadline

Fall Semester – April

Spring Semester - August

Pre - Pre - Arrival/ Departure Orientation

Fall – July (Dates on Availability of both Parties*)

Spring – November (Dates on Availability of both Parties*)



ABOUT BANGALORE

Bangalore, known as the “Silicon Valley of India,” is a vibrant and diverse city that offers a unique blend of traditional heritage and modernity. Its rich heritage is reflected in the numerous ancient temples, palaces, and gardens that dot the city, providing a glimpse into its glorious past. Bangalore’s transport system is well developed, with an extensive network of buses, metro rail, and ride hailing services, making it convenient for residents and visitors to navigate the city. The lifestyle in Bangalore is dynamic and cosmopolitan, with a mix of traditional and contemporary influences. The city is home to a diverse population that embraces various cultures, making it a welcoming place for foreigners. The city boasts a thriving nightlife scene with a wide array of clubs, bars and live music venues that cater to different tastes and preferences. Bangalore provides an inclusive and hospitable environment for people from all walks of life.



General Travel Advisory

- ✓ Keep the school informed about your travel schedule.
- ✓ Travel by road in an organized tour bus or by train within South Indian states.
- ✓ For travel to Agra and Rajasthan, consider air travel.
- ✓ Avoid hitchhiking and asking strangers for help.
- ✓ Keep the International Office informed about your travel itinerary.

Useful Websites

<https://www.karnatakaturism.org/>

<http://www.tamilnadutourism.org/>

<http://www.pondytourism.in/>

<https://www.keralaturism.org/>

<https://goa-tourism.com/>

<https://bangalore.afindia.org/>

Program Structure

Total Credits 105

01 Term I

Starts – August

Ends – November

Total Credits – 19

Core Papers

Interated Live Projects

02 Term II

Starts – November

Ends – February

Total Credits – 22

Core Papers

Interated Live Projects

03 Term III

Starts – March

Ends – MAY

Total Credits – 25

Major Electives

Minor Electives

Summer Internships

03 Term IV & V (at Partner School)

Starts – August

Ends – December

Total Credits – 36

Major Electives

Minor Electives

Emperical Project

04 Term IV

Starts – In the December

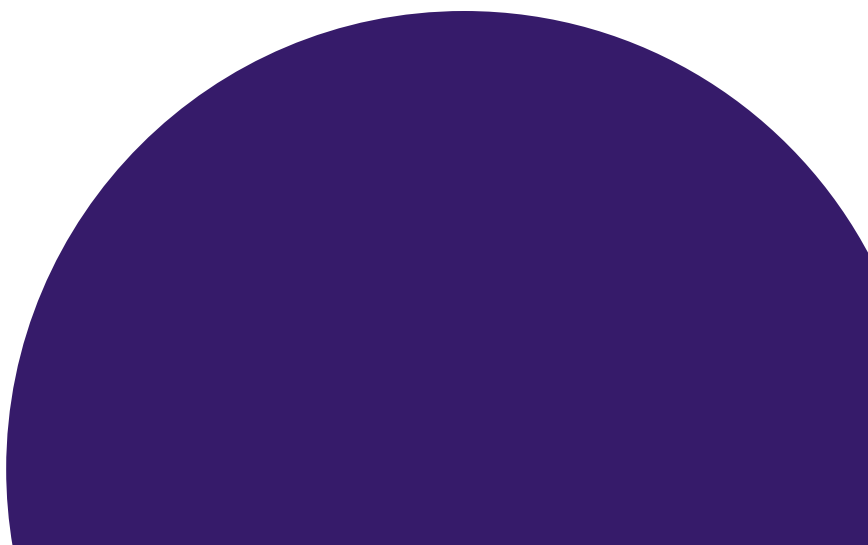
Ends – March

Total Credits – 6

Major Electives

Minor Electives

Empirical Project





Get In Touch



Ms. Shashin Singh
Head International Relations



Shashin@msrim.org



www.msrim.in/rim-international-office